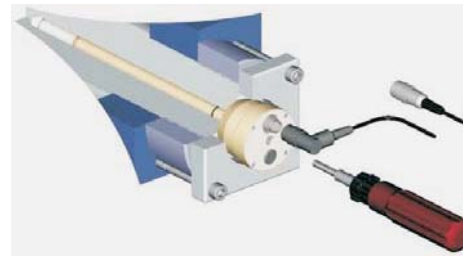


SML-LH

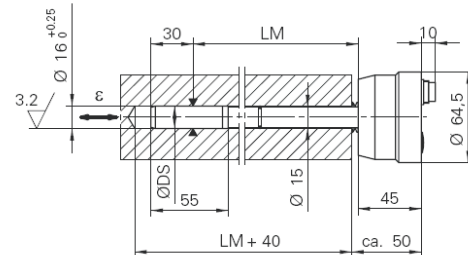
Measuring-Probe for strain measurement in bore-holes

The measuring probe SML-LH measures the strain at the sensor tip in any bore-hole. The mounting is rather easy insert, torque connect ready. The signal output is designed for a calibrated proportional output signal. Due to the easy mounting, as well as to its high precision and industry conform execution, this measuring probe can be used for strain and force measurements respectively, by machine manufacturers.



Features:

- Very easy installation using a torque wrench
- Strain gauges protected by an aluminum or steel sleeve
- Accuracy 1%
- Measuring range $\pm 1000\mu\epsilon$
- Calibrated signal output
- Voltage or current output
- Safe mounting by using an elastic insertion unit



Technical specifications

Sensing element	strain gauges	350	ohm
Measuring range (f.s.)		+/- 1000	
output signal	1000 , traction	+ 10,00	V
Accuracy		0.5	%
Hysteresis		<0,2	%
overload		200	% of f.s.
Mounting torque		3	Nm
Power supply		18 .. 33	V
Current input		< 40	mA
operating temperature range		-20 °C ~ +70 °C	
Protection class		IP-54	
Reset voltage		10 ~ 30	V
Connector type, male		DIN 45326	

Ordering information

SML-LH-O-DD-LLL → LLL = Length in mm

↓ ↓ ↓

Type O = output options DD = Diameter of hole (sensor-tip) in mm

 1 = Voltage output +/-10V 16 = sensor tip 16mm

 2 = Current output 0..20mA

 3 = Current output 4..20mA

SENSORMATE Technology Inc.

http://www.sensormate.com E-mail: sales@sensormate.com
TEL: + 886 2 2999 5245 FAX: + 886 2 2995 0782